

Robots, Parts, and Custom Solutions

www.SuperDroidRobots.com

Toll Free: (866) SDRobots

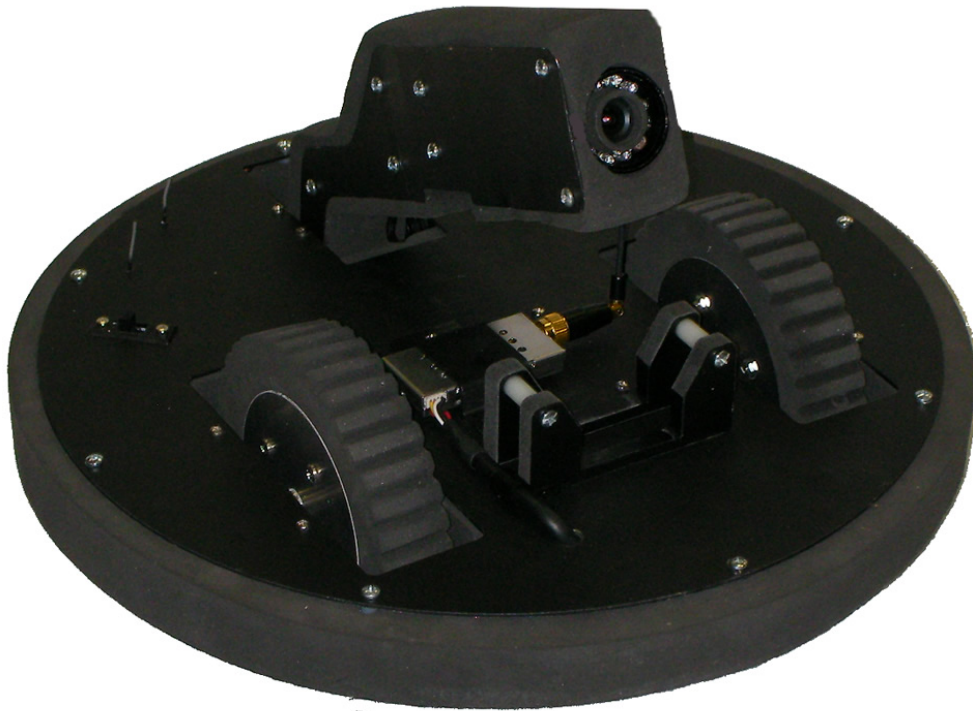
Phone: (919) 557-9162

Fax: 775-416-2596

1421 E. Broad Street #101

Fuquay Varina, NC 27526

ESP "Toss Bot" Surveillance & Inspection Robot



ESP Robot Specifications:

- ESP (Enter, Survey, and Perceive): Robot is made of foam and aluminum so it's a light weight, impact resistant, durable "Toss Bot".
- Unlike other Toss Bots, this one is able to traverse many obstacles, self righting, mobile, and best of all affordable.
- Weights 3 pounds
- 12 inches in diameter, about 5" high.
- High quality color 10 LED total darkness night vision IR camera on a boom arm allowing tilt from horizontal to vertical.
- Camera arm also used for self righting.
- Lithium Battery supply. Run time 1 to 6 hours depending on use
- Aluminum pieces are anodized flat black.
- 4.5" custom foam tires
- Ground clearance: 1.25 inches
- Speed: 0 to 1.2 feet per second, infinitely adjustable/controllable

ESP Control Console Specifications:

- Standard controller with 2.5 inch color LCD receiver.
- Other custom versions are also available etc.
- Standard versions include the following:
 - 2.4GHz frequency spectrum control system (searches for best most reliable channel) with a long range dual receiver
 - 900MHz video transmitter and receiver
 - Tested urban range 200+ yards (effective operation range for video and control with multiple building structures, wireless interference, etc. Concrete and steel walls will reduce range further)
 - Tested rural line of site range 1000+ feet
 - Full range of speed control for drive motors.
 - Position control of camera tilt/self righting
 - Extra channel(s) for lights or other custom options.
 - Includes rechargeable batteries for control console and video receiver



Chargers:

- Automatic Lithium Charger for Robot's Battery. Battery is removable and spares can be purchased.
- Charger for Remote and LCD video receiver.

Pricing:

- Complete Robot with controls and chargers: \$2495.00