

- Notes:**
1. Assembly should be performed by knowledgeable and skilled individual. SuperDroid Robots offers assembly services if you are not comfortable reading schematics and performing work.
  2. Wire gauges depend on load and size of motors.
  3. Fuse size depends on load and size of motors.
  4. Switch should be rated for at least the same amount of current as the fuse.
  5. To charge batteries unplug them and use charger or run parallel wire with plug for charger.
  6. Servo pigtail (TE-040-001) typically used. Receiver powered from motor controller (ensure motor controller rated for receiver).

**RC receiver Pin out**

1	2	3
4	5	6
7	8	9
10	11	12

**RC Receiver**  
 Note In receiver connect:  
 1. 0 v to pin 3, 6, 9 or 12.  
 2. 5V to pin 2, 5, 8 or 11.

**Arduino Pin Out**

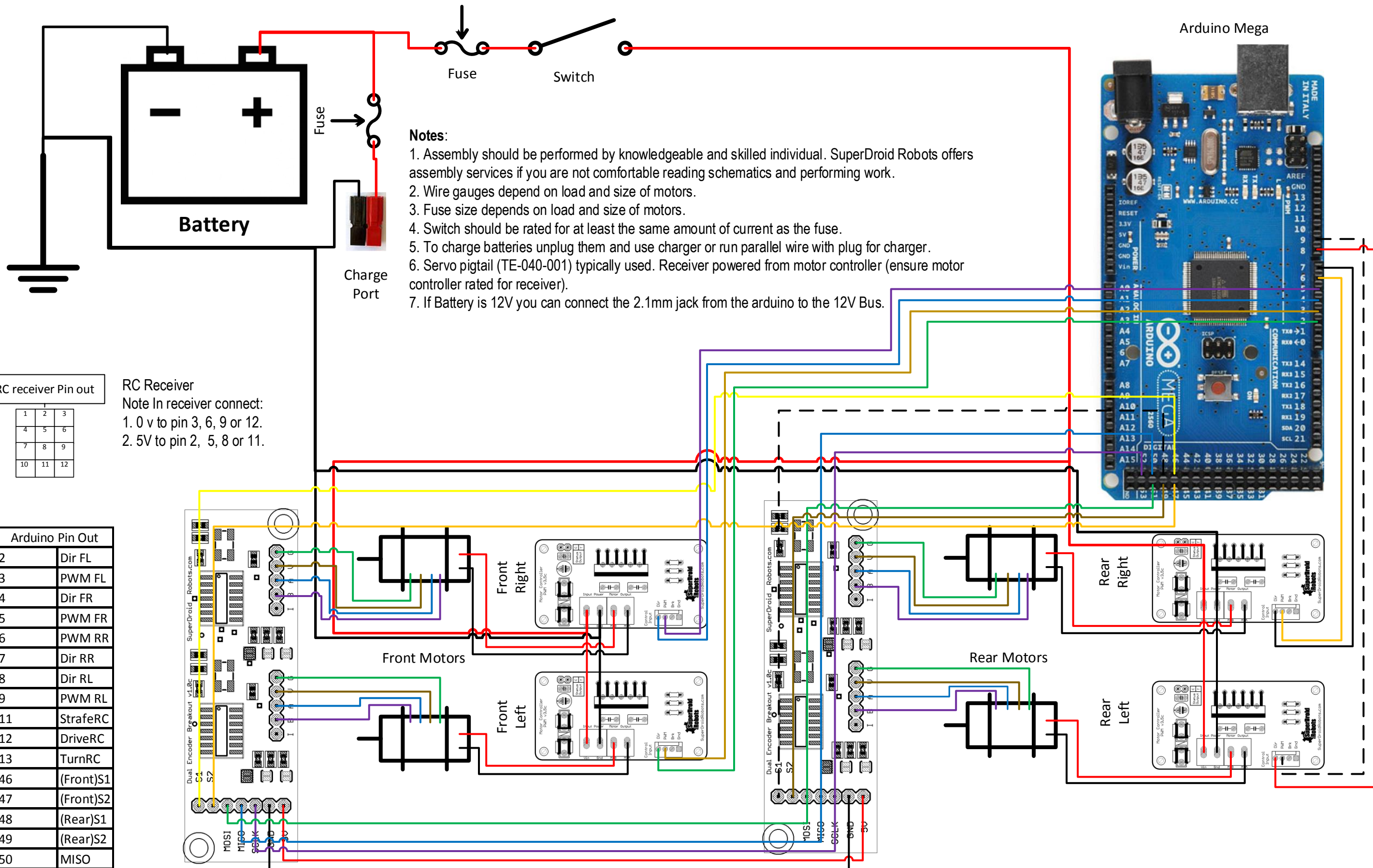
6	(Tx)S1
7	(Estop)S2
11	StrafeRC
12	DriveRC
13	TurnRC
46	(Front)S1
47	(Front)S2
48	(Rear)S1
49	(Rear)S2
50	MISO
51	MOSI
52	SCK
5V	
GND	

Dual Encoder Breakout Board

**Sabertooth Front**  
 Address 128  
 Dip Switches 3, 4, 5, 6 ON

**Sabertooth Rear**  
 Address 129  
 Dip Switches 3, 5, 6 ON





- Notes:**
1. Assembly should be performed by knowledgeable and skilled individual. SuperDroid Robots offers assembly services if you are not comfortable reading schematics and performing work.
  2. Wire gauges depend on load and size of motors.
  3. Fuse size depends on load and size of motors.
  4. Switch should be rated for at least the same amount of current as the fuse.
  5. To charge batteries unplug them and use charger or run parallel wire with plug for charger.
  6. Servo pigtail (TE-040-001) typically used. Receiver powered from motor controller (ensure motor controller rated for receiver).
  7. If Battery is 12V you can connect the 2.1mm jack from the arduino to the 12V Bus.

**RC receiver Pin out**

1	2	3
4	5	6
7	8	9
10	11	12

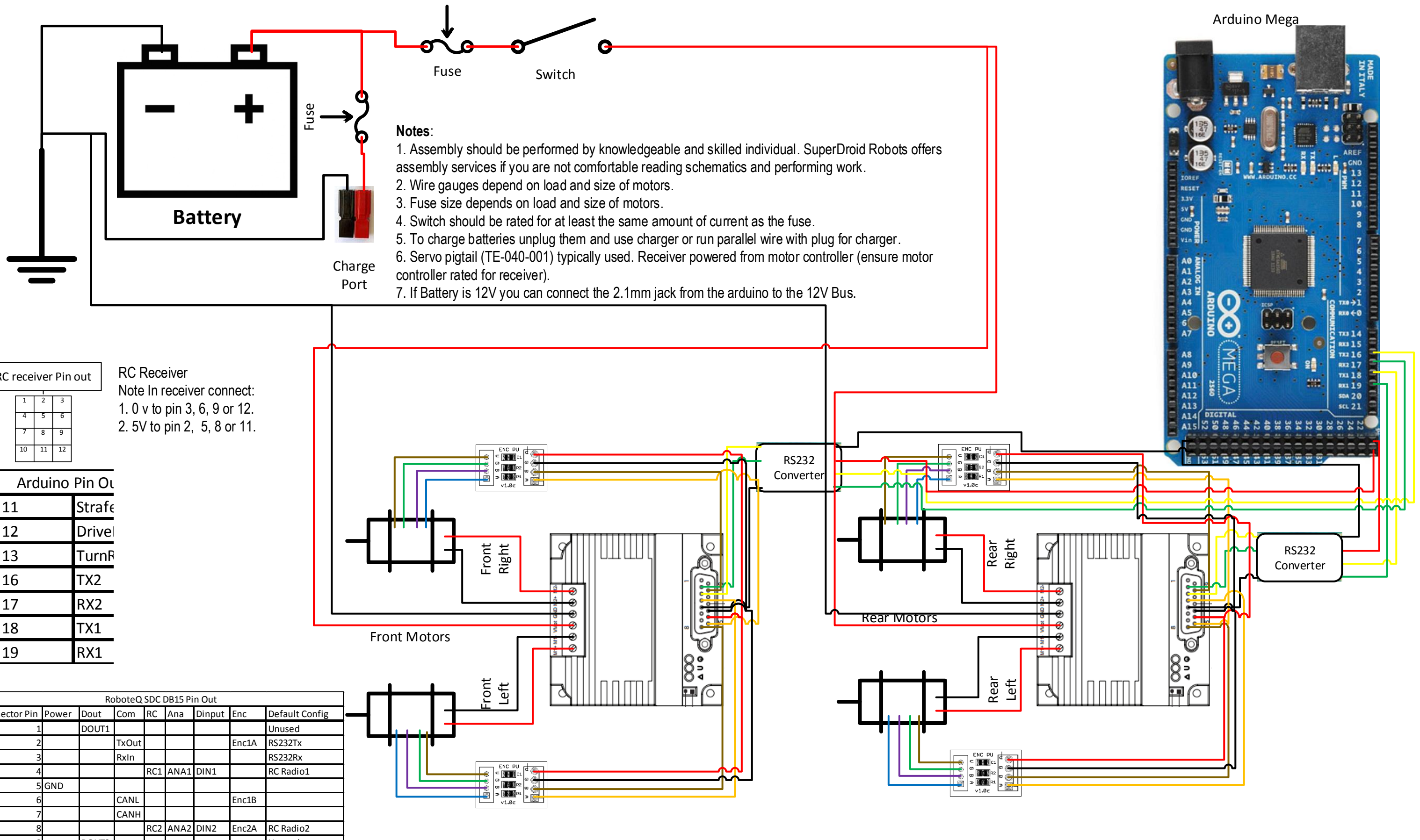
**RC Receiver**  
 Note In receiver connect:  
 1. 0 v to pin 3, 6, 9 or 12.  
 2. 5V to pin 2, 5, 8 or 11.

**Arduino Pin Out**

2	Dir FL
3	PWM FL
4	Dir FR
5	PWM FR
6	PWM RR
7	Dir RR
8	Dir RL
9	PWM RL
11	StrafeRC
12	DriveRC
13	TurnRC
46	(Front)S1
47	(Front)S2
48	(Rear)S1
49	(Rear)S2
50	MISO
51	MOSI
52	SCK

Dual Encoder Breakout Board





- Notes:**
1. Assembly should be performed by knowledgeable and skilled individual. SuperDroid Robots offers assembly services if you are not comfortable reading schematics and performing work.
  2. Wire gauges depend on load and size of motors.
  3. Fuse size depends on load and size of motors.
  4. Switch should be rated for at least the same amount of current as the fuse.
  5. To charge batteries unplug them and use charger or run parallel wire with plug for charger.
  6. Servo pigtail (TE-040-001) typically used. Receiver powered from motor controller (ensure motor controller rated for receiver).
  7. If Battery is 12V you can connect the 2.1mm jack from the arduino to the 12V Bus.

**RC receiver Pin out**

1	2	3
4	5	6
7	8	9
10	11	12

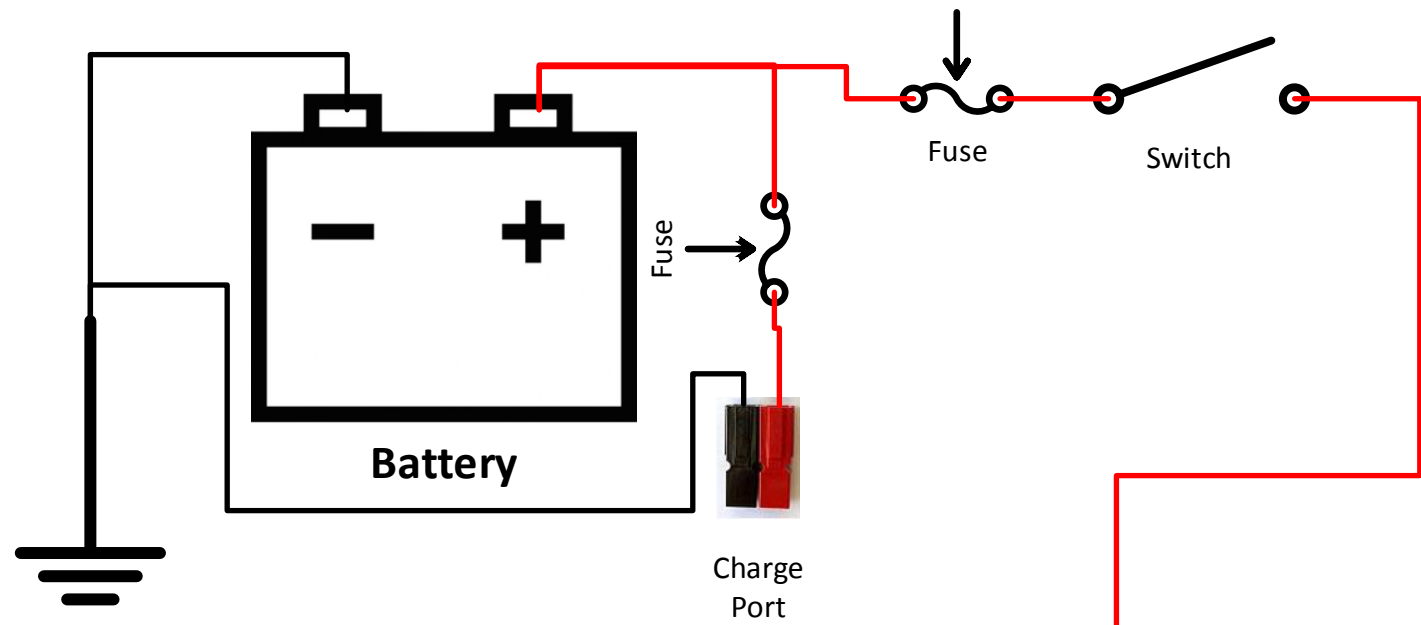
**RC Receiver**  
 Note In receiver connect:  
 1. 0 v to pin 3, 6, 9 or 12.  
 2. 5V to pin 2, 5, 8 or 11.

**Arduino Pin Out**

11	Strafe
12	DriveL
13	TurnR
16	TX2
17	RX2
18	TX1
19	RX1

RoboteQ SDC DB15 Pin Out								
Connector Pin	Power	Dout	Com	RC	Ana	Dinput	Enc	Default Config
1		DOU1						Unused
2			TxOut				Enc1A	RS232Tx
3			RxIn					RS232Rx
4				RC1	ANA1	DIN1		RC Radio1
5	GND							
6			CANL				Enc1B	
7			CANH					
8				RC2	ANA2	DIN2	Enc2A	RC Radio2
9		DOU2						Unused
10					ANA5	DIN5		Unused
11				RC4	ANA4	DIN4		Unused
12				RC3	ANA3			Unused
13	GND						Enc2B	
14	5V OUT							
15					ANA6	DIN6		Unused





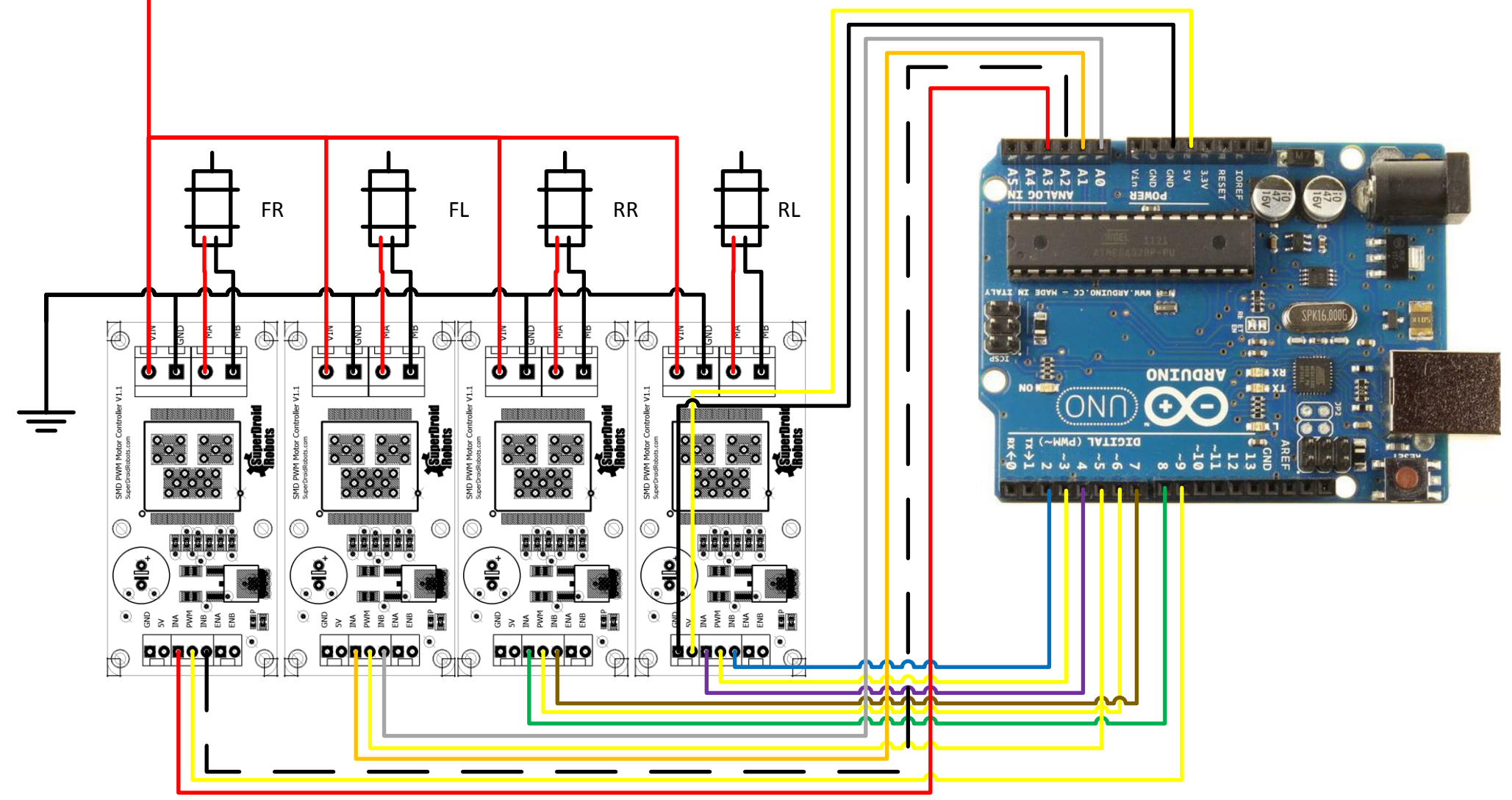
**Notes:**

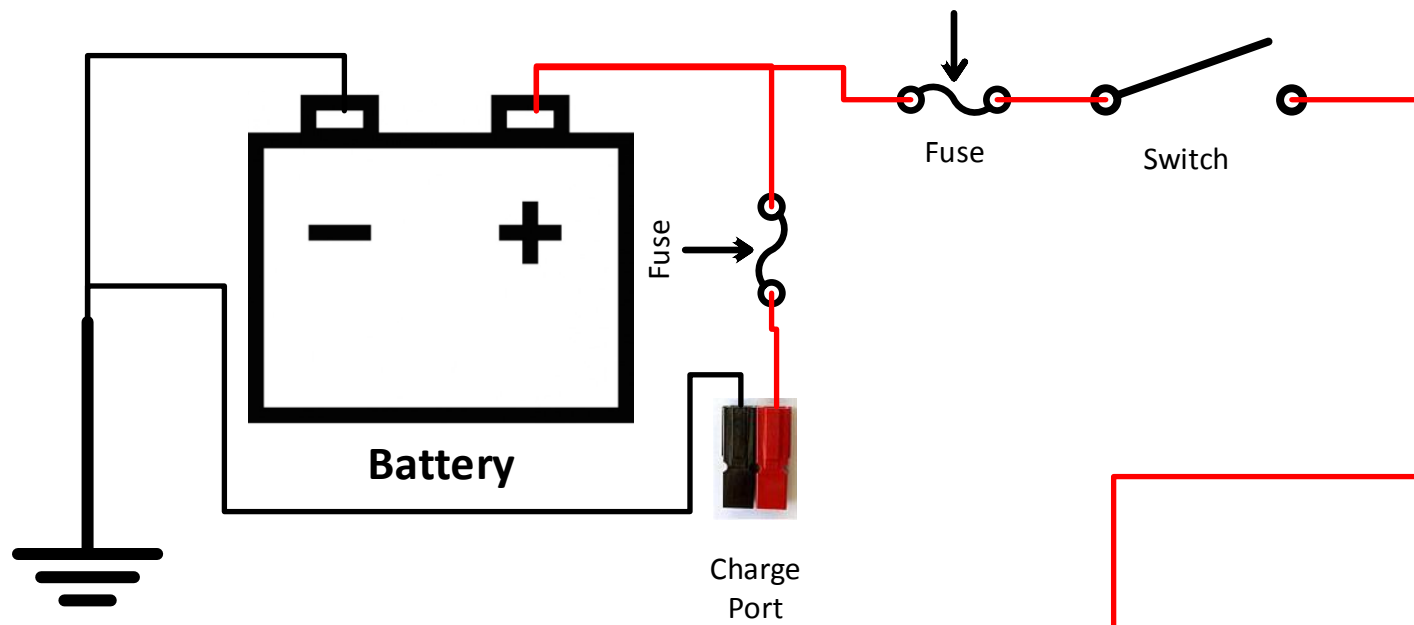
1. Assembly should be performed by knowledgeable and skilled individual. SuperDroid Robots offers assembly services if you are not comfortable reading schematics and performing work.
2. Wire gauges depend on load and size of motors.
3. Fuse size depends on load and size of motors.
4. Switch should be rated for at least the same amount of current as the fuse.
5. To charge batteries unplug them and use charger or run parallel wire with plug for charger.
6. Servo pigtail (TE-040-001) typically used. Receiver powered from motor controller (ensure motor controller rated for receiver).
7. If Battery is 12V you can connect the 2.1mm jack from the arduino to the 12V Bus.

**RC receiver Pin out**

1	2	3
4	5	6
7	8	9
10	11	12

**RC Receiver**  
 Note In receiver connect:  
 1. 0 v to pin 3, 6, 9 or 12.  
 2. 5V to pin 2, 5, 8 or 11.





**Notes:**

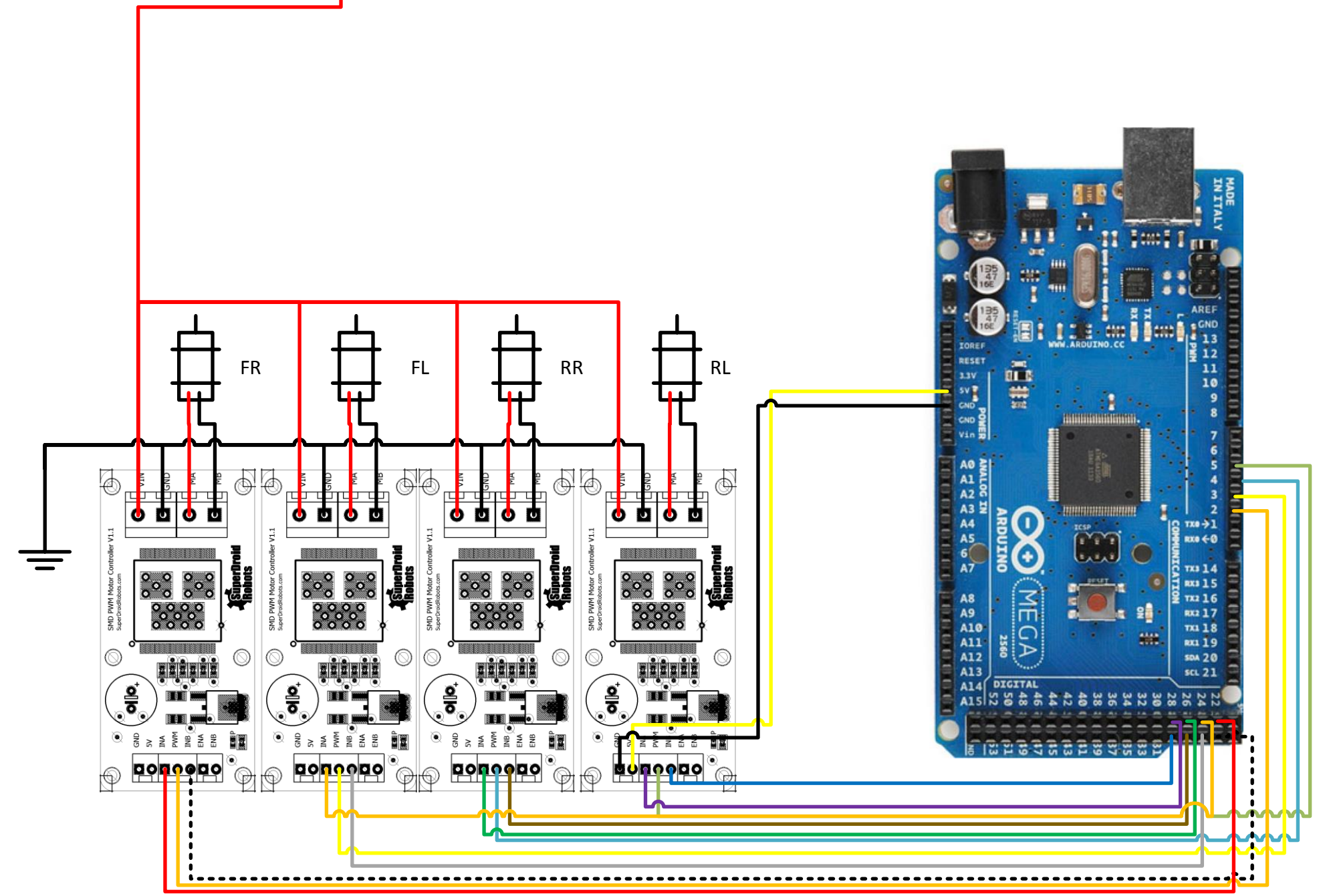
1. Assembly should be performed by knowledgeable and skilled individual. SuperDroid Robots offers assembly services if you are not comfortable reading schematics and performing work.
2. Wire gauges depend on load and size of motors.
3. Fuse size depends on load and size of motors.
4. Switch should be rated for at least the same amount of current as the fuse.
5. To charge batteries unplug them and use charger or run parallel wire with plug for charger.
6. Servo pigtail (TE-040-001) typically used. Receiver powered from motor controller (ensure motor controller rated for receiver).
7. If Battery is 12V you can connect the 2.1mm jack from the arduino to the 12V Bus.

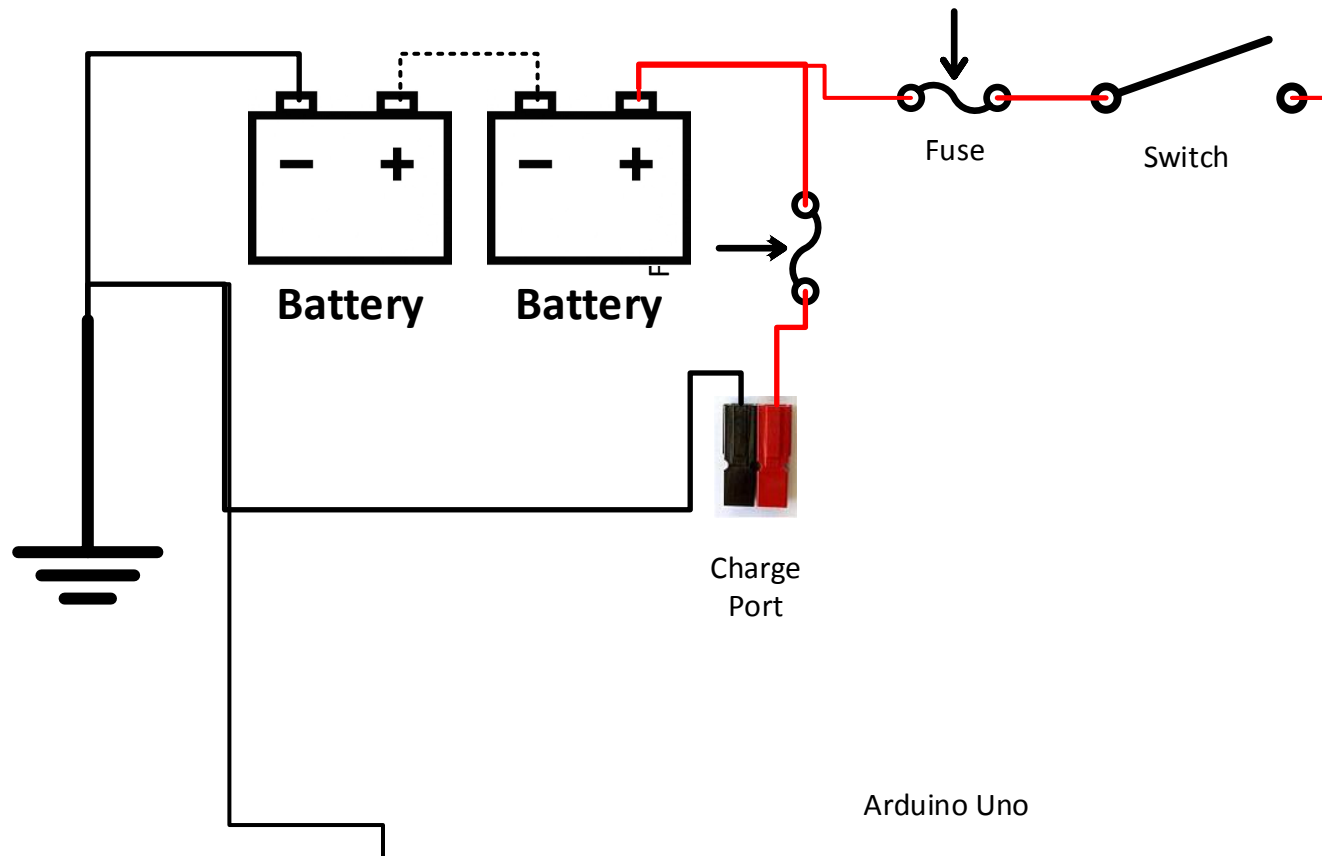
**RC receiver Pin out**

1	2	3
4	5	6
7	8	9
10	11	12

RC Receiver  
 Note In receiver connect:  
 1. 0 v to pin 3, 6, 9 or 12.  
 2. 5V to pin 2, 5, 8 or 11.

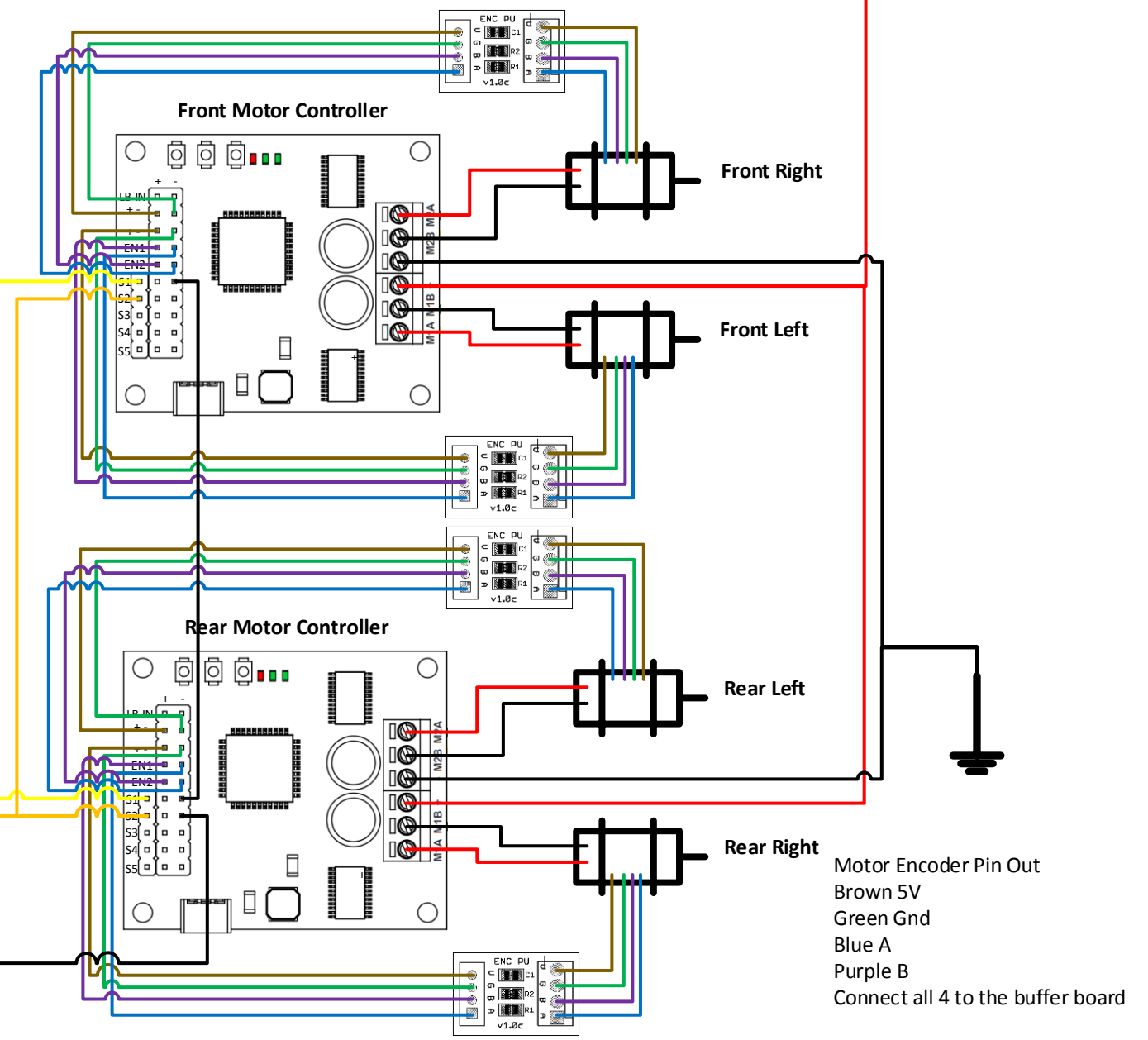
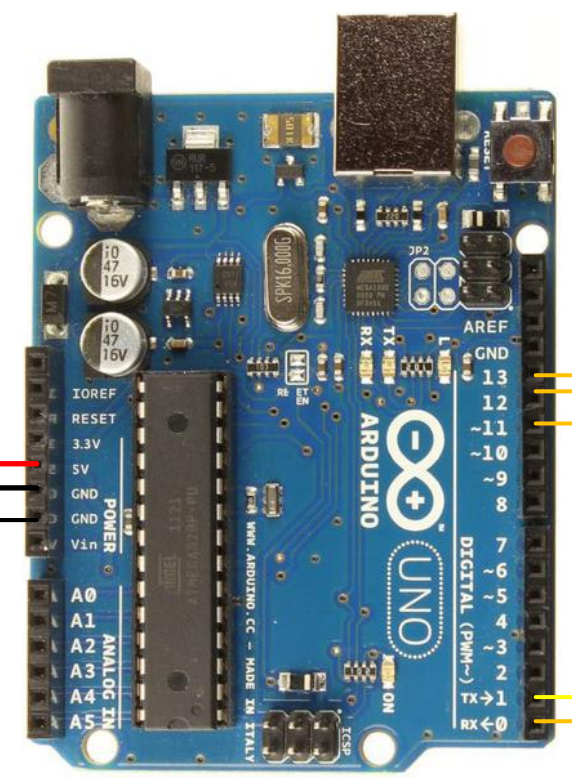
Arduino Pin Out	
FR PWM	2
FR INA	22
FR INB	23
FL PWM	3
FL INA	24
FL INB	25
RR PWM	4
RR INA	26
RR INB	27
RL PWM	5
RL INA	28
RL INB	29





**Notes:**

1. Assembly should be performed by knowledgeable and skilled individual. SuperDroid Robots offers assembly services if you are not comfortable reading schematics and performing work.
2. Wire gauges depend on load and size of motors.
3. Fuse size depends on load and size of motors.
4. Switch should be rated for at least the same amount of current as the fuse.
5. To charge batteries unplug them and use charger or run parallel wire with plug for charger.
6. Servo pigtail (TE-040-001) typically used. Receiver powered from motor controller (ensure motor controller rated for receiver).
7. If Battery is 12V you can connect the 2.1mm jack from the arduino to the 12V Bus.



SuperDroid Robots Inc