

Network Camera IP3133

Quick Installation Guide

This guide describes the basic functions of IP3133.

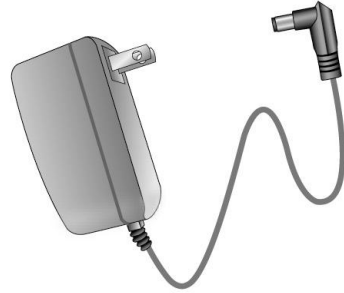
All detailed information is described in the user's manual.

1 Check package contents

● IP3133



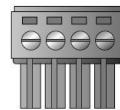
● Power adapter



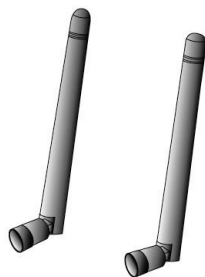
● Camera stand



● I/O connector (attached)



● Antennas

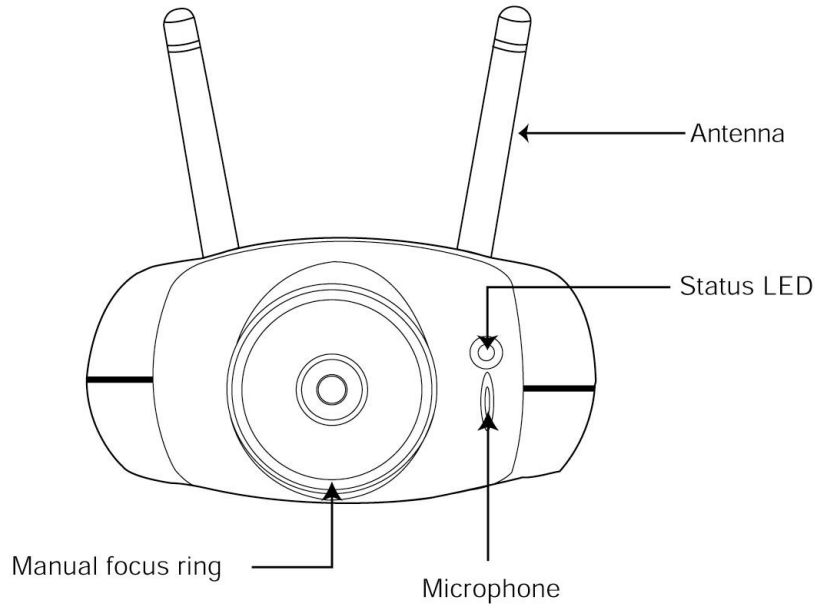


● Software CD

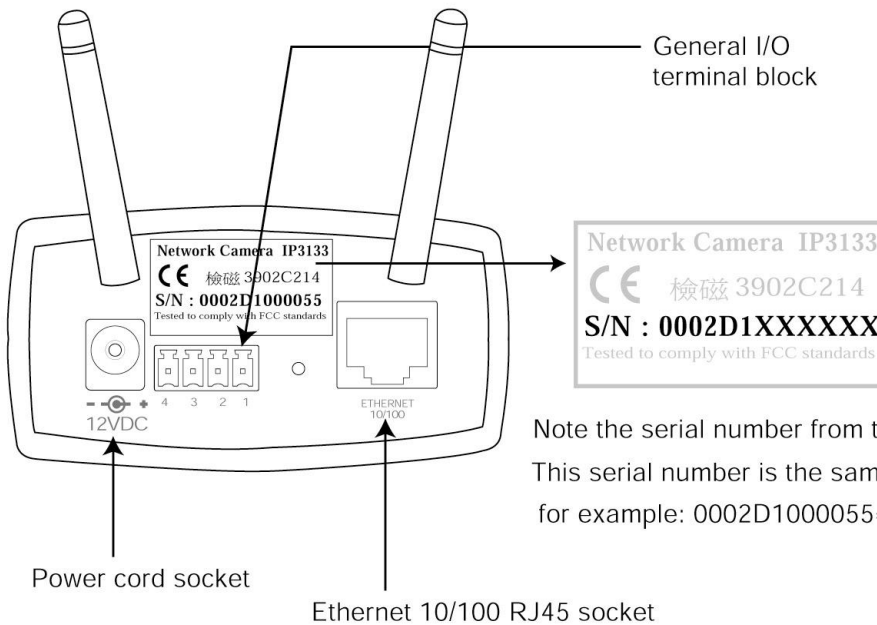


2 Physical description

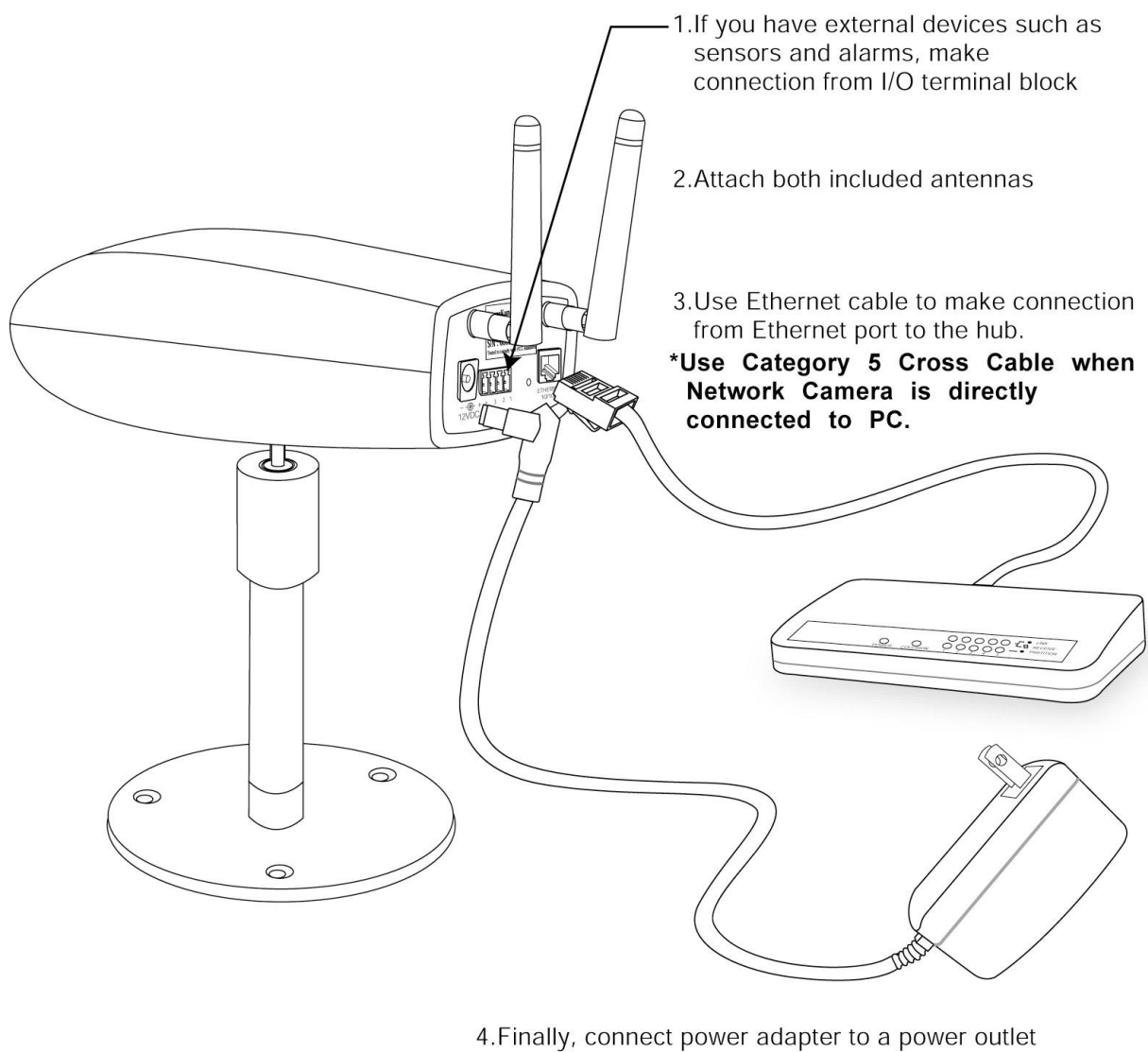
● Front panel



● Back panel

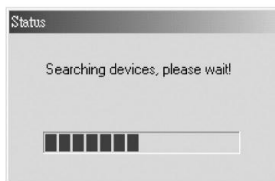


3 Install your Network Camera in Ethernet network



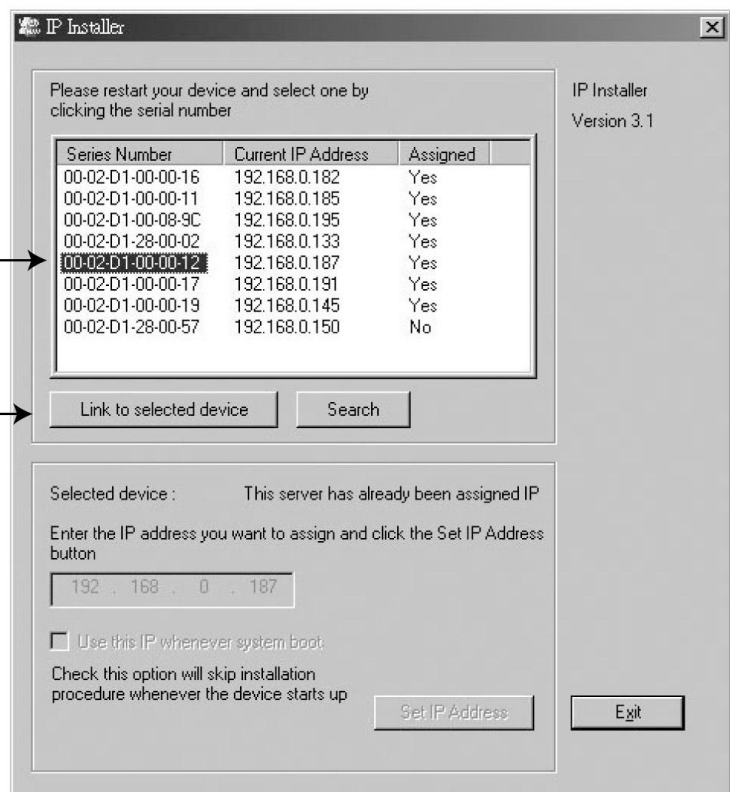
4 Assign IP address

- 1.Run the IP Installer under the Utility directory from software CD.
- 2.The program will search the servers or cameras on the same LAN.



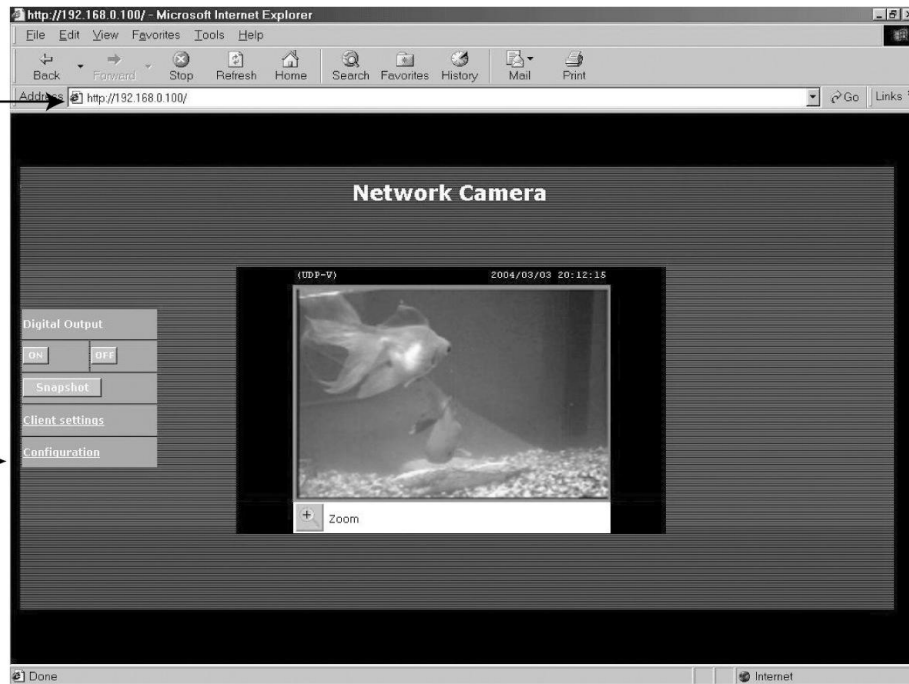
- 3.After searching, the main installer window will pop up. Click on serial number that matches the one you just note from **2** Physical description

- 4.Click "Link to selected device" to connect the Internet Explorer to the Network Camera.



5 Open Internet Explorer to verify your installation

1. Type the IP address and press enter



2. Congratulations! You have been able to connect Network Camera. It is highly recommended to click "Configuration" for further settings

For detailed of further configuration, see user's manual in the CD-Rom.